

KOSTAD LOOKBOOK



— ...
003

2024, APRIL
PRODUCTS & PHILOSOPHY

Kostad
Schoellergasse 9
2630 Ternitz
NÖ, Austria

kostad.at
service.kostad.at
office@kostad.at
+43 (0)2234 72402



2024, APR ...

PROJECTS
PHILOSOPHY
PRODUCT RANGE
ROADMAP

- 6 About Kostad
- 10 Project process
- 12 Contacts
- 18 DC products
- 22 UNITY60
Wall Charge

- 26 UNITY20
Wallbox I Mobile
- 34 UNITY50-120
- 38 UNITY150-360
- 42 UNITYMultipoint
- 44 References
- 46 Projects



CHARGING POINTS *MORE THAN 22,500*

AS OF APRIL 2024



office@kostad.at
www.kostad.at

About Kostad

WE WANT TO APPLY OUR ACHIEVEMENTS IN INNOVATION, SUSTAINABILITY AND CUSTOMER SATISFACTION NOT ONLY TO LEAD THE WAY IN CHARGING TECHNOLOGY, BUT ALSO TO CHANGE THE WAY PEOPLE TRAVEL. KOSTAD IS AN ICON OF OUTSTANDING QUALITY, EFFICIENCY AND PROGRESS IN THE WORLD OF ELECTROMOBILITY. TOGETHER, WE ARE SHAPING A FUTURE OF BOUNDLESS AND ECO-FRIENDLY MOBILITY.

We are a long-established industrial company that has specialised developing and producing charging stations for electric cars since 2009 and we are passionately dedicated to shaping the future of sustainable mobility. Our vision is to become the world's leading provider of charging stations for electric cars and to expand the limits of possibility. We strive to develop the most efficient and powerful charging stations through continuous innovation and collaboration with renowned technology partners.



***“We are dedicated to
electric excellence”***

Our mission & vision

One of our goals is to work with our customers to expand the infrastructure of fast chargers throughout Europe. We want to increase the number of charging stations and also significantly reduce charging times to boost the appeal of the electric driving experience. We focus on intuitive user interfaces, a

seamless charging experience and outstanding customer service. We want to eliminate electric car drivers' worries about range and charging infrastructure and give them the solid certainty that they can always rely on our charging stations.





CONNECT



We take the time to get to know our customers and partners



SERVICE



Comprehensive range of services & maintenance packages



PLANNING



We work with you to develop the perfect project plan



PRODUCTION



Every product is manufactured at our plant in Austria



IMPLEMENT



We will help you with the delivery and installation of your products



SUPPORT



We are always here for you even after your project has been completed

OUR PROJECT PROCESS



UNITED

IF YOU HAVE ANY FURTHER QUESTIONS OR NEED OUR SUPPORT, PLEASE DO NOT HESITATE TO CONTACT US.

YOUR KOSTAD TEAM.

Günter Köstenberger junior has managed Kostad Steuerungsbau GmbH since 2006. The company specialises in developing and producing intelligent control and automation technology. In 2009, Kostad took on a leading role in the electromobility sector by adding active development and production of charging stations to the company's repertoire. Today, we are your first port of call for comprehensive solutions of the highest technological standards.

If you have any specific questions, please do not hesitate to contact us. We would be glad to take the time to conduct a comprehensive consultation and will do everything we can to turn your wishes and ideas into reality.

Benefit from the reliable and flexible services provided by our qualified specialist staff and commission the Kostad team – working for you worldwide.

office@kostad.at
+43 (0)2234 72402-0
www.kostad.at



Introducing the team

EXCEPTIONAL PROJECTS NEED EXCEPTIONAL PEOPLE. WITH THE WILL TO ALWAYS FIND THE PERFECT SOLUTION. WITH FLEXIBLE AND CUSTOMER-ORIENTED PROCESSES. WITH TEAMS WHO GIVE THEIR ALL TO EVERY PROJECT. WITH A PASSION BOTH FOR INNOVATION AND FOR PRESERVING THE TRIED AND TESTED.

Our team can look back proudly over many years of experience and is always ready to find the perfect solution for any project. Customer satisfaction and excellent service are at the heart of everything we do.

We know that project management is a vital success factor. That is why we set great store by flexible processes that are accurately tailored to our customers needs and requirements. From planning to implementation, we will support you with great expertise and commitment. We not only aim to provide innovative solutions, but also to preserve tried-and-tested methods that meet your demands. Our team is dedicated to staying at the forefront of technology and pushing the envelope to bring you the best of everything.

Günter Köstenberger jr.

CEO/FOUNDER

Günter Köstenberger junior has managed Kostad Steuerungsbaue GmbH since 2006. The company specialises in developing and designing intelligent control and automation technology



Oliver Dzijan

CEO

Oliver Dzijan is creating a solid foundation for Kostad's expansion through prudent leadership and forward-looking vision.



Wolfgang Baumgartner

CTO

Wolfgang Baumgartner's technological expertise and visionary approach forges a strong basis for technological development at Kostad.



Clemens Schneider

CFO

- Financial management
- Risk management
- Strategic development

Contact: cgs@kostad.at



Achim Lenz

Head of software development

- IT infrastructure
- Information security
- Technological innovation

Contact: al@kostad.at



Manuel Mikic

Head of sales

- Sales strategy
- Project support
- Consulting

Contact: mm@kostad.at



Marlies Kollmann

Sales

- Sales
- Customer care
- Consulting

Contact: mk@kostad.at



Daniela Grienauer

Head of Marketing & Human Resources

- Strategic development
- Marketing
- Public Relations

Contact: dg@kostad.at



Philipp Sanz

Art Director

- CI / CD
- Web / Print
- Conception

Contact: ps@kostad.at





Introducing Kostad Schweiz AG

UNDER THE LEADERSHIP OF CEO KAJETAN MAZENAUER, OUR DEDICATED TEAM WORKS WITH UNSWERVING COMMITMENT TO ADVANCE SWITZERLAND'S CHARGING INFRASTRUCTURE WITH OUR PIONEERING UNITY PRODUCTS. WE ARE DELIGHTED TO BE MAKING A CRUCIAL CONTRIBUTION TO THE FUTURE OF ELECTROMOBILITY IN SWITZERLAND WORKING IN A PARTNERSHIP THAT BRINGS INNOVATION AND SUSTAINABILITY TO THE FORE.

Our mission extends beyond the ordinary. We cooperate with some of the most pre-eminent Swiss logistics companies. In this way, we are not only defining

the electromobility transition, but also setting new standards of efficiency and environmental awareness in the transport industry.

We have a laser focus on our customers demands and a vision for a clean future. We are striving to establish a reliable and comprehensive charging solution that promotes expansion and bolsters sustainability. Working together, the Kostad team is shaping a bright future for mobility both in Switzerland and beyond.

Kajetan Mazenauer



CEO

Kajetan Mazenauer pursues the most stringent quality standards. His team works ceaselessly to create customer orientated charging solutions.

Contact: km@kostad.ch



Arbil Shalita



Head of sales

Arbil Shalita can help you to find the perfect charging solution for your needs and guarantees a smooth implementation of your charging infrastructure project.

Contact: as@kostad.ch



Raphael Schur



Technical director

Raphael Schurr is your first point of contact for technical questions or issues related to our services.

Contact: rs@kostad.ch



UNITY DC PRODUCTS





WE WANT OUR ELECTROMOBILITY PRODUCTS TO CREATE A MORE ECO-FRIENDLY FUTURE. WE ALSO PROVIDE INNOVATIVE SOLUTIONS FOR PRIVATE CUSTOMERS, ENERGY SUPPLIERS AND BUSINESSES.

◆ Unity 60 Wallcharge

◆ Unity 20 Wallbox

◆ Unity 20 Mobile

◆ Unity 50-120 Power Charge

◆ Unity 150-360 Epic Charge

◆ Unity Multipoint

OUR PRODUCTS

UNITY60 WALL CHARGE

The Unity60 is a cutting-edge, compact charging solution for electric vehicles. It combines an innovative, space-saving design with high output. It charges vehicles extremely quickly with an output rating of up to 60 kW to slash charging times. The parallel charging option let two vehicles be charged simultaneously with 30 kW each.

The Unity60 also comes with improved maintenance options to minimise service costs. Its robust design and high-quality materials make it extremely durable and reliable even in tough environmental conditions. One major advantage of the Unity60 is its barrier-free design. It was specially developed to meet the needs of people with reduced mobility.





UNITY₆₀ WALL CHARGE

Wall Charge UNITY60

The Kostad Unity60 Wall Charge is the latest innovation in the Unity product series and is the ideal solution for public spaces. It also features large surface areas that can be used for advertising purposes.

- Quality product made in Austria
- Innovative power electronics
- Robust stainless steel housing
- OCPP 1.6 JSON
- Compliant with calibration law
- 1x 60 kW or 2x 30 kW
- Optional credit card terminal

Name	Kostad UNITY 60 Wall Charge
Charging type	DC fast charging
Outputs	CCS
AC power input	C, CC, 91 A, 63 kVA @ 50 Hz @ 400 V
Input voltage range	400 VAC +/- 10% (47-63 Hz) CE version
DC power output	60 kW; 2x30 kW parallel charging
DC output voltage	200-1000 VDC
Number of vehicles charged	2
Cable length	3.5 m (from housing outlet) optional: 4.5 / 5.5 / 6.5 / 7.5 m (+/- 10%)
Max. current of CCS charging cable	150 A
EMC	Class B (residential) conducted and Class B (residential) radiated emissions according to EN 61000-6-3:2007; EN61581-21-2
Network type	TN-S, TN-C, TN-C-S, TT (requires external RCD)
Mains connection	3P + N + PE
Protection class	Overcurrent, overvoltage, undervoltage, insulation monitoring, full integrated surge protection
Overvoltage category	Type II
Power factor (full load)	>0.97 to 0.99
THDI	<5%
Efficiency	> 96% (peak)
Standby output	80 W
Impedance voltage	<50 V / network-dependent
Precharge current	<1 A
Power measurement	Optional: MID measurement of DC outputs Optional: AC & DC output versions compliant with calibration law (Q4 2024)
Network connection	GSM / 4G / LTE
User interface	
Connectivity	Internet access via 4G/3G/Ethernet (RJ45)
User authentication	RFID; credit card terminal (optional)
User interface	7" LCD touchscreen
Communication protocols	OCPP 1.6/2.0 JSON
RFID reader	ISO 14443 A + B to part 4 and ISO/IEC 15693, Mifare, NFC
Emergency off button	Yes
Configuration	
Software updates	Over-the-air updates via Kostad
Control & configuration	Kostad HMI on display configurator
Languages	German, English and over 15 further languages available
General features	
IP and IK ratings	IP54 and IK10 (housing) / IK8 (touchscreen)
Housing type	Powder-coated stainless steel
Operating altitude	Up to 2000 m
Operating temperature	-30°C to + 50°C
Temperature derating	Ambient temperature up to 50°C: 100% power output Ambient temperature above 50°C: Power reduction (derating)
Storage temperature	-40°C to + 70°C
Humidity	20-95% Rh, non-condensing
Installation type	Wall-mounted; stand (optional)
Dimensions (HxWxD)	1200x580x311 mm
Weight	156 kg
Certification and standards	
Charging system	IEC 61851-1 ed 3, ID 61851-21-2, IEC 61851-23 ed 1, IEC 61851-24 ed 1, IEC 62196-2, IEC 62196-3, IEC 61000
Communication with EV	DIN 70121
Communication with backend	OCPP 1.6 JSON; OCPP2.0 JSON ready

***“No matter what the
future brings us,
we will be able to charge it...”***



UNITY20 WALL CHARGE

The Kostad Unity20 Wallbox is compact in design. It features state-of-the-art technology and produces low noise. This DC charging station is designed with a robust stainless steel housing for flawless long-term performance. The Unity20 is a reliable and future-proof charging station thanks to continuous updates and the remote maintenance option.

The Wallbox has the unmistakable precision and quality of development, design and production of a premium

product made entirely in Austria. It has been successfully established on the market for many years and has been extensively tested and reviewed.

With its robust stainless steel housing, it is designed for reliable and long-lasting performance.





Wall Charge
UNITY20

The Kostad Unity20 Wallbox is a compact unit with a high efficiency rate of 96%. It is the ideal solution for semi-public areas.

- Quality product made in Austria
- Innovative power electronics
- Wall-mounted/optional stand
- OCPP 1.6 JSON
- Robust stainless steel housing
- Up to 30 kW charging capacity

UNITY₂₀
WALL CHARGE

Name	Kostad UNITY 20 Wallbox
Charging type	DC fast charging
Outputs	CCS, CHAdeMo (optional)
AC power input	C, CJ: 32 A, 22 kVA @ 50 Hz @ 400 V / C, CJ: 40 A, 28 kVA @ 50 Hz @ 400 V
Input voltage range	400 VAC +/- 10% (47-63 Hz) CE version
DC power output	22 kW ; 30 kW (optional)
DC output voltage	200-1000 VDC
Number of vehicles charged	1
Cable length	3.5 m (from housing outlet) Optional: 4.5 / 5.5 / 6.5 / 7.5 m (+/- 10%)
Max. current of CCS charging cable	80 A
Max. current of CHAdeMO charging cable	80 A
EMC	Class B (residential) conducted and Class B (residential) radiated emissions according to EN 61000-6-3:2007; EN61581-21-2
Mains connection	3P + PE
Protection class	Overcurrent, overvoltage, undervoltage, insulation monitoring, integrated surge protection
Overvoltage category	Type II
Power factor (full load)	>0.97 to 0.99
THDI	<5%
Efficiency	>95.5% (peak)
Standby output	70 W
Impedance voltage	<50 V / network-dependent
Precharge current	<1 A
Power measurement	Optional: MID measurement for DC outputs Optional: Version compliant with calibration law (Q4 2024)
Network connection	GSM / 4G / LTE
User interface	
Connectivity	Internet access via 4G/3G/Ethernet (RJ45)
User authentication	RFID
User interface	7" LCD; 7" LCD direct sunlight (optional)
Communication protocols	OCPP 1.6/ OCPP 2.0 JSON
RFID reader	ISO 14443 A + B to part 4 and ISO/IEC 15693, Mifare, NFC
Emergency off button	Yes
Configuration	
Software updates	Over-the-air updates via Kostad
Control & configuration	Kostad HMI on display configurator
Languages	German, English and over 15 further languages available
General features	
IP and IK ratings	IP54 and IK10 (housing) / IK8 (touchscreen)
Housing type	Stainless steel
Operating altitude	Up to 2000 m
Operating temperature	-30°C to + 50°C
Temperature derating	Ambient temperature up to 50°C: 100% power output Ambient temperature above 50°C: Power reduction (derating)
Storage temperature	-40°C to + 70°C
Humidity	20-95% Rh, non-condensing
Installation type	Wall-mounted; stand (optional)
Dimensions (HxWxD)	650 x 500 x 230 mm
Weight	65 kg
Certification and standards	
Charging system	ICE 61851-1 ed 3, ID 61851-21-2, IEC 61851-23 ed 1, IEC 61851-24 ed 1, IEC 62196-2, IEC 62196-3, IEC 61000
Communication with EV	DIN 70121, CHAdeMO 1.2
Communication with backend	OCPP 1.6/2.0 JSON ready

“Made with love in Austria”



UNITY20 MOBILE CHARGE

The Unity20 Mobile Charger is specially designed for customers who are looking for a mobile charging solution but do not want to compromise on performance. Its great flexibility makes it the perfect solution for businesses and fleet operators who need to charge their electric vehicles reliably and quickly.

The mobility of the Unity20 Mobile Charger lets you position your charging stations even more flexibly and use them in varying locations. It help you to keep your electric vehicles at optimum charge, whether

at events, construction sites or at temporary charging points.

As with all our products, quality is key for the Unity20 Mobile. It features a robust housing and sophisticated technology that ensure reliable performance whatever the external conditions or field of use.





Mobile Charge
UNITY20

The Unity20 Mobile Charger is specially designed for customers looking for a mobile charging solution. It is designed to be both flexible and durable.

- Quality product made in Austria
- Custom cable length
- Up to 30 kW charging power
- Robust stainless steel housing
- OCPP 1.6 JSON
- Construction sites, specialist workshops and much more.

UNITY₂₀
MOBILE CHARGE

Name		Kostad UNITY 20 Mobile Charge
Charging type		DC fast charging
Outputs		CCS, CHAdeMo (optional)
AC power input		C, Cj: 32 A, 22 kVA @ 50 Hz @ 400 V / C, Cj: 40 A, 28 kVA @ 50 Hz @ 400 V
Input voltage range		400 VAC +/- 10% (47-63 Hz) CE version
DC power output		22 kW ; 30 kW (optional)
DC output voltage		200-1000 VDC
Number of vehicles charged		1
Cable length		3.5 m (from housing outlet) Optional: 4.5 / 5.5 / 6.5 / 7.5 m (+/- 10%) Mains connection: 10 m AC CEE 32 A / CEE 64 A option for 30 kW version
Max. current of CCS charging cable		80 A
Max. current of CHAdeMO charging cable		80 A
EMC		Class B (residential) conducted and Class B (residential) radiated emissions according to EN 61000-6-3:2007; EN61581-21-2
Mains connection		3P + PE / 3P + N + PE
Protection class		Overcurrent, overvoltage, undervoltage, insulation monitoring, integrated surge protection
Overvoltage category		Type II
Power factor (full load)		>0.97 to 0.99
THDI		<5%
Efficiency		>95.5% (peak)
Standby output		70 W
Impedance voltage		<50 V / network-dependent
Precharge current		<1 A
Power measurement		Optional: MID measurement for DC outputs Optional: Version compliant with calibration law (Q4 2024)
Network connection		GSM / 4G / LTE
User interface		
Connectivity		Internet access via 4G/3G/Ethernet (RJ45)
User authentication		RFID
User interface		7" LCD
Communication protocols		OCPP 1.6/2.0 JSON
RFID reader		ISO 14443 A + B to part 4 and ISO/IEC 15693, Mifare, NFC
Emergency off button		Yes
Configuration		
Software updates		Over-the-air updates via Kostad
Control & configuration		Kostad HMI on display configurator
Languages		German, English and over 15 further languages available
General features		
IP and IK ratings		IP54 and IK10 (housing) / IK8 (touchscreen)
Housing type		Stainless steel
Operating altitude		Up to 2000 m
Operating temperature		-30°C to + 50°C
Temperature derating		Ambient temperature up to 50°C: 100% power output Ambient temperature above 50°C: Power reduction (derating)
Storage temperature		-40°C to + 70°C
Humidity		20-95% Rh, non-condensing
Installation type		Mobile
Dimensions (HxWxD)		1007 x 730 x 550 mm
Weight		80 kg
Certification and standards		
Charging system		ICE 61851-1 ed 3, ID 61851-21-2, IEC 61851-23 ed 1, IEC 61851-24 ed 1, IEC 62196-2, IEC 62196-3, IEC 61000
Communication with EV		DIN 70121, CHAdeMO 1.2
Communication with backend		OCPP 1.6 JSON; OCPP2.0 JSON ready

Our world is electrified



UNITY50-120 POWER CHARGE

Kostad Power Charger fast charging stations are powerful and efficient solutions for charging electric vehicles in a flash. They come with charging capacities of 50 to 120 kilowatts to power up vehicles in the shortest time possible.

Kostad Power Chargers are ultra-reliable and extremely user-friendly. They have been developed for optimum charging performance while protecting vehicle batteries. Integrated safety mechanisms make the charging process reliable and the vehicle and charging station can interact using advanced communication technologies.

The robust and weatherproof design of Kostad fast charging stations makes them suitable for both indoor and outdoor use. They come equipped with a range of connectors and plugs to ensure that they are compatible with a variety of different electric vehicles.

All in all, Kostad Power Charger fast charging stations are a dependable, efficient and user-friendly solution for charging electric vehicles quickly. They are ideal for applications in public areas, such as motorway service stations, car parks, shopping centres and businesses, and help to further the growth of electromobility.





Power Charge
UNITY120

The Unity120 charging station charges electric vehicles with a power output of up to 120 kW, which significantly speeds up the charging process.

- Quality product made in Austria
- Innovative power electronics
- Robust stainless steel housing
- OCPP 1.6 JSON
- Compliant with calibration law
- 1x 120 kW or 2x 60 kW
- Optional credit card terminal

Name	Kostad UNITY 120 Power Charge
Charging type	DC fast charging & AC Type 2 charging
Outputs	CCS, CHAdeMO, AC Type 2
AC power input	C, CC, CJ: 186 A, 128 kVA @ 50 Hz @ 400 V CCP/CJP: 218 A, 150 kVA @ 50 Hz @ 400 V (22 kW)
Input voltage range	400 VAC +/- 10% (47-63 Hz) CE version
DC power output	120 kW; 1x120 kW or parallel charging at 2x60 kW (optional)
AC power output (optional)	22 kW; 43 kW (optional)
DC output voltage	200-1000 VDC
Number of vehicles charged	2; 3 (optional)
Cable length	3.5 m (from housing outlet) optional: 4.5 / 5.5 / 6.5 / 7.5 m (+/- 10%)
Max. current of CCS charging cable	250 A / 400 A (peak)
Max. current of CHAdeMO charging cable	125 A
EMC	Class B (residential) conducted and Class B (residential) radiated emissions according to EN 61000-6-3:2007; EN61581-21-2
Network type	TN-S, TN-C, TN-C-S, TT (requires external RCD)
Mains connection	3P + N + PE
Protection class	Overcurrent, overvoltage, undervoltage, insulation monitoring, integrated surge protection
Overvoltage category	Type II
Power factor (full load)	>0.97 to 0.99
THDI	<5%
Efficiency	>95.5% (peak)
Standby output	120 W (including LEDs)
Impedance voltage	<50 V / network-dependent
Precharge current	<1 A
Power measurement	Optional: MID measurement for AC & DC outputs Optional: AC & DC output versions compliant with calibration law (Q4 2024)
Network connection	GSM / 4G / LTE
User interface	
Connectivity	Internet access via 4G/3G/Ethernet (RJ45)
User authentication	RFID; credit card terminal (optional)
User interface	9" LCD touchscreen
Communication protocols	OCPP 1.6/2.0 JSON
RFID reader	ISO 14443 A + B to part 4 and ISO/IEC 15693, Mifare, NFC
Emergency off button	Yes
Configuration	
Software updates	Over-the-air updates via Kostad
Control & configuration	Kostad HMI on display configurator
Languages	German, English and over 15 further languages available
General features	
IP and IK ratings	IP54 and IK10 (housing) / IK8 (touchscreen)
Housing type	Powder-coated stainless steel
Operating altitude	Up to 2000 m
Operating temperature	-30°C to + 50°C
Temperature derating	Ambient temperature up to 50°C: 100% power output Ambient temperature above 50°C: Power reduction (derating)
Storage temperature	-40°C to + 70°C
Humidity	20-95% Rh, non-condensing
Installation type	Free-standing housing
Dimensions (HxWxD)	1929 x 822 x 618 mm
Weight	430 kg
Certification and standards	
Charging system	ICE 61851-1 ed 3, ID 61851-21-2, IEC 61851-23 ed 1, IEC 61851-24 ed 1, IEC 62196-2, IEC 62196-3, IEC 61000
Communication with EV	DIN 70121, CHAdeMO 1.2
Communication with backend	OCPP 1.6 JSON; OCPP2.0 JSON ready

UNITY120
POWER CHARGE

***We are dedicated to
electric excellence***



UNITY150-360 EPIC CHARGE

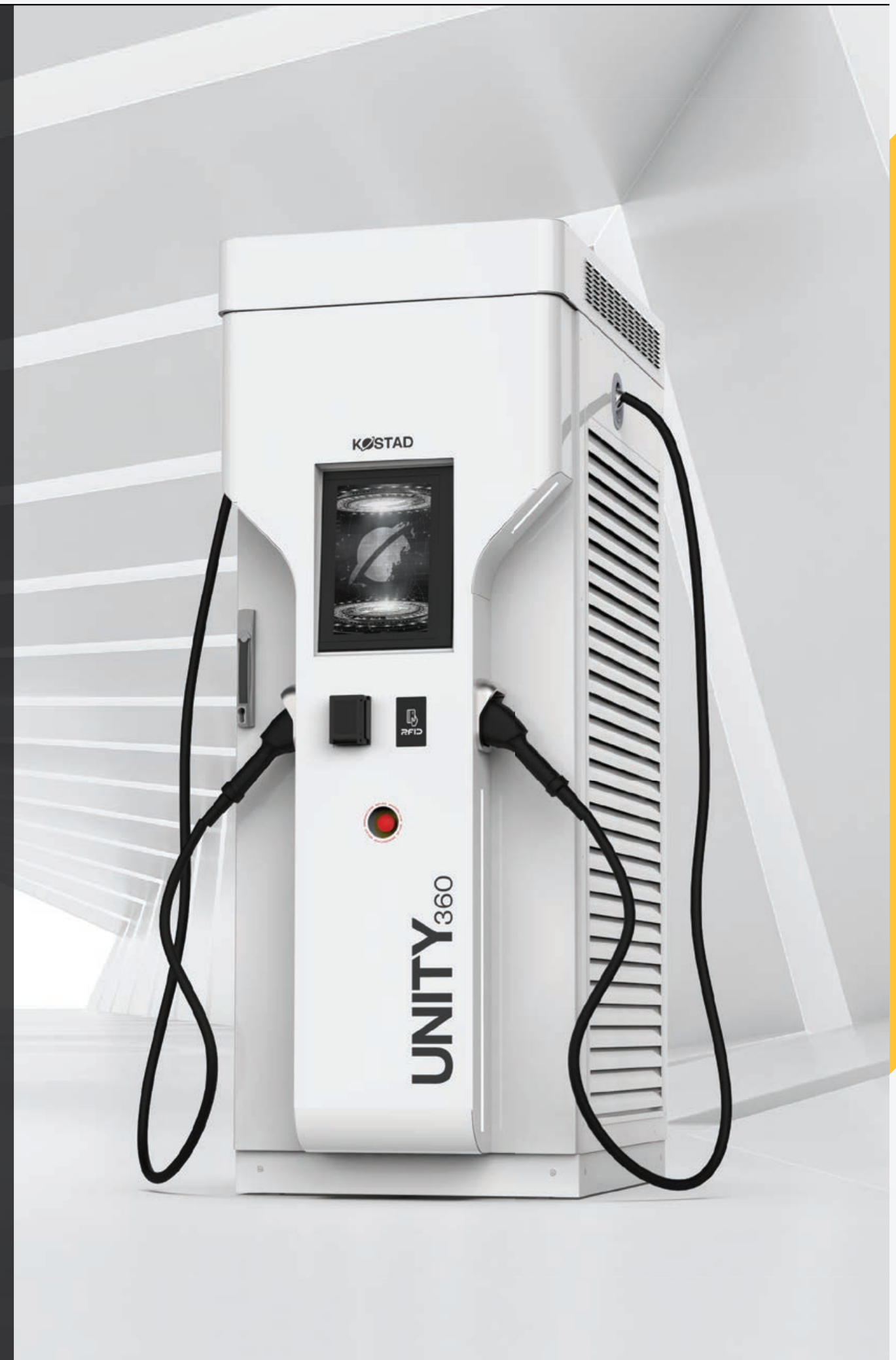
The Kostad Epic Charger series rewrites the standards for ultra-fast charging of electric vehicles. They are a revolutionary solution for fast and efficient charging with impressive charging capacities from 150 to 360 kilowatts.

The powerful technology minimises charging time for outstanding efficiency and optimum utilisation of the charging infrastructure.

Kostad Epic Charger fast charging stations utilise cutting-edge charging technologies and innovative safety mechanisms. They are designed to maximise charging performance while protecting and preserving

the service life of vehicle batteries. They also feature advanced charging management functions to make optimum use of the available power capacity.

Kostad Epic Chargers are powerful, reliable and user-friendly solutions that are perfect for busy locations, such as motorway service areas, service stations, airports and commercial premises. Their revolutionary technology is helping to take electromobility to the next level.





UNITY³⁶⁰ EPIC CHARGE

Epic Charge UNITY360

This charging station is impressively robust with a stainless steel housing designed for many years of outdoor use. It is available with output ratings from 150 to 360 kW.

- Quality product made in Austria
- Low-maintenance & low-wear
- Optional liquid-cooled charging cables
- OCPP 1.6 JSON
- 1000 VDC
- Compliant with calibration law

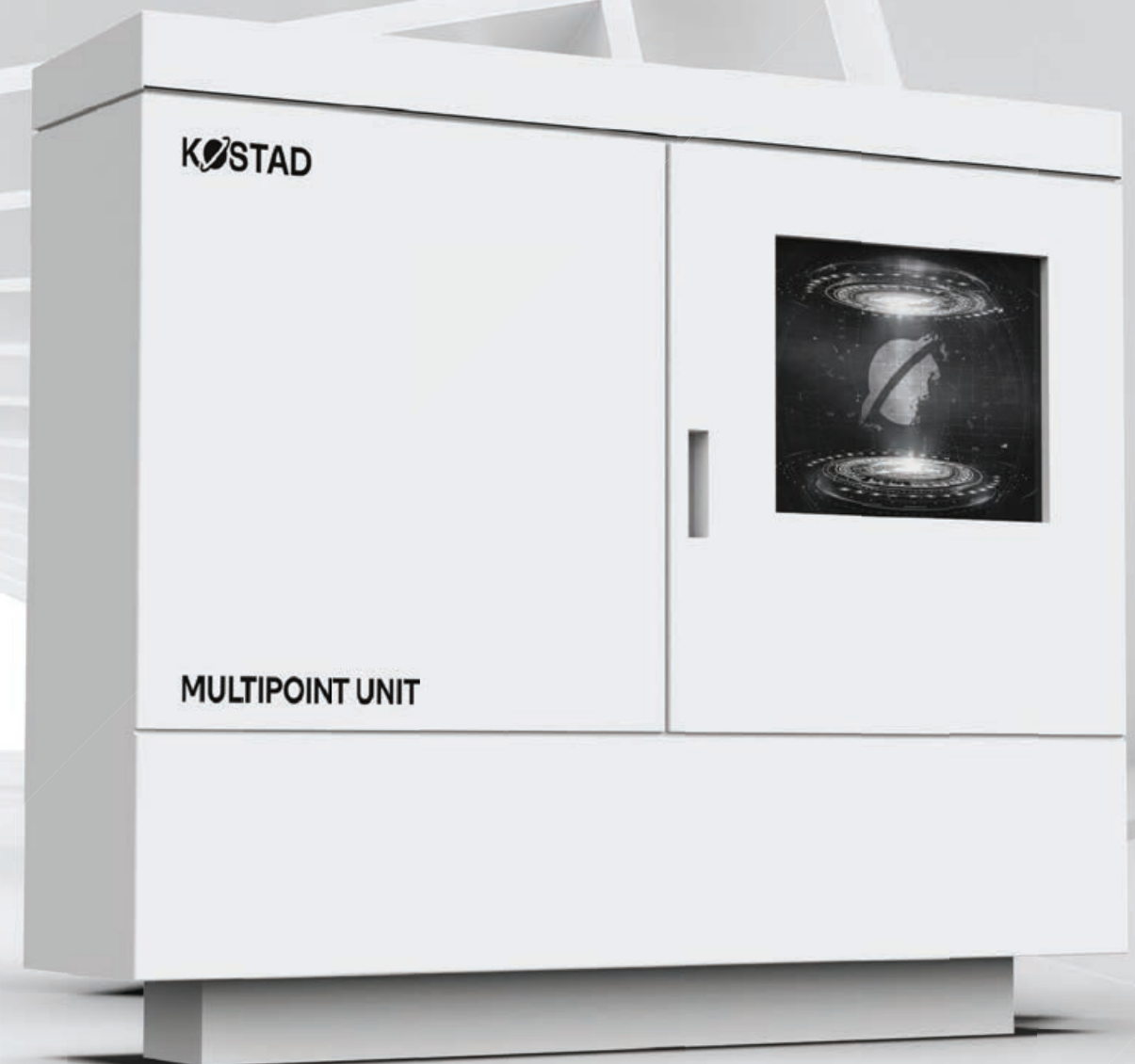
Name	Kostad UNITY 360 Epic Charge
Charging type	DC fast charging & AC Type 2 charging
Outputs	CCS, CHAdeMO, AC Type 2 socket
AC power input	C, CC, CJ: 546 A, 378 kVA @ 50 Hz @400 V CCT, CJT: 578 A, 400 kVA @ 50 Hz @400 V
Input voltage range	400 VAC +/- 10% (47-63 Hz) CE version
DC power output	360 kW (1x360 kW or 2x180 kW parallel charging)
AC power output (optional)	22 kW
DC output voltage	200-1000 VDC
Number of vehicles charged	2; 3 (optional)
Cable length	3.5 m (from housing outlet) optional: 4.5 / 5.5 / 6.5 / 7.5 m (+/- 10%)
Max. current of CCS charging cable	400 A (peak) / 500 A liquid-cooled (optional)
Max. current of CHAdeMO charging cable	125 A
EMC	Class B (residential) conducted and Class B (residential) radiated emissions according to EN 61000-6-3:2007; EN61581-21-2
Network type	TN-S, TN-C, TN-C-S, TT (requires external RCD)
Mains connection	3P + PE / 3P + N + PE (AC optional)
Protection class	Overcurrent, overvoltage, undervoltage, insulation monitoring, integrated surge protection
Overvoltage category	Type II
Power factor (full load)	>0.96
THDI	<4.5%
Efficiency	>95.5% (peak)
Standby output	120 W (including LEDs)
Impedance voltage	<50 V / network-dependent
Precharge current	<1 A
Power measurement	Optional: MID measurement for AC & DC outputs Optional: AC & DC output versions compliant with calibration law (Q4 2024)
Network connection	GSM / 4G / LTE
User interface	
Connectivity	Internet access via 4G/3G/Ethernet (RJ45)
User authentication	RFID; credit card terminal (optional)
User interface	15" LCD
Communication protocols	OCPP 1.6/2.0 JSON
RFID reader	ISO 14443 A + B to part 4 and ISO/IEC 15693, Mifare, NFC
Emergency off button	Yes
Configuration	
Software updates	Over-the-air updates via Kostad
Control & configuration	Kostad HMI on display configurator
Languages	German, English and over 15 further languages available
General features	
IP and IK ratings	IP54 and IK10 (housing) / IK8 (touchscreen)
Housing type	Powder-coated stainless steel
Operating altitude	Up to 2000 m
Operating temperature	-30°C to + 50°C
Temperature derating	Ambient temperature up to 40°C: 100% power output, above 40°C: no power reduction in the first 15 minutes; subsequently, 1% power reduction per 1°C
Storage temperature	-40°C to + 70°C
Humidity	20-95% Rh, non-condensing
Installation type	Free-standing housing
Dimensions (HxWxD)	2125 x 822 x 1168 mm
Weight	720 kg
Certification and standards	
Charging system	ICE 61851-1 ed 3, ID 61851-21-2, IEC 61851-23 ed 1, IEC 61851-24 ed 1, IEC 62196-2, IEC 62196-3, IEC 61000
Communication with EV	DIN 70121, CHAdeMO 1.2
Communication with backend	OCPP 1.6 JSON; OCPP2.0 JSON ready

UNITY MULTIPOINT

Invest in the future today with the Kostad Unity Multipoint. The central charging unit lets you power multiple charging points from a secure equipment room.

This system can handle up to 24 charging points, making it perfect for professional fleet management. Integrated load management ensures that the available power is fairly distributed during simultaneous charging.

The charging unit consists of multiple separate power modules that can be augmented with additional charging points as demand grows. The Multipoint Unit is configured to use an optimised backend solution to control and monitor the charging power. This makes it easy to monitor the current status of the charging stations and manage services, faults and maintenance very efficiently.





III GÖNDLE
autohaus

A|S|I|F|i|N|A|G

EVN

SIEMENS



AVIA
VOLT

EVI סונוול
פתרונות לרכב חשמלי

OUR CLIENTS

THE BREADTH OF OUR EXPERTISE AND REFERENCES COVERS A WIDE RANGE OF INDUSTRIES. WE CAN LOOK BACK PROUDLY ON A PROFUSION OF SUCCESSFUL PROJECTS COMPLETED IN COLLABORATION WITH LONG-STANDING PARTNERS BY APPLYING OUR EXPERT KNOWLEDGE. WE HAVE COMPILED A FEW OF OUR SUCCESSFUL PROJECT FOR YOU HERE. WE WOULD BE DELIGHTED TO SUPPORT YOU WITH OUR EXPERTISE AND TRIED-AND-TESTED APPLICATION TECHNOLOGIES.



Expertise

"Kostad has proved that they are not only technology experts, but also true partners who are dedicated to finding sustainable solutions."

Martin Lörtscher

CEO - Hugelshofer Gruppe



Your one-stop shop

"Kostad combines high-quality charging solutions, ongoing support and a flexible approach to our partnership – a total package that we value greatly."

Michael Hickelsberger

BMW Göndle



For an intelligent future

"We are committed to using sustainable, intelligent and data-driven energy solutions. In Kostad, we have found a company that shares our mission."

Robert Steinböck

Head of MOON Sales

UNITY PROJECTS





BMW KNÖBL **UNITY150-360**



AVIA **UNITY50-120**



EVN - ST.PÖLTEN **UNITY50-120**



SOCAR **UNITY50-120**



HUGELSHOFER **UNITY150-360**



REAL **UNITY150-360**



SWITZERLAND **UNITY50-120**



ÖBB **UNITY20**



ROSENBAUER **UNITY20**



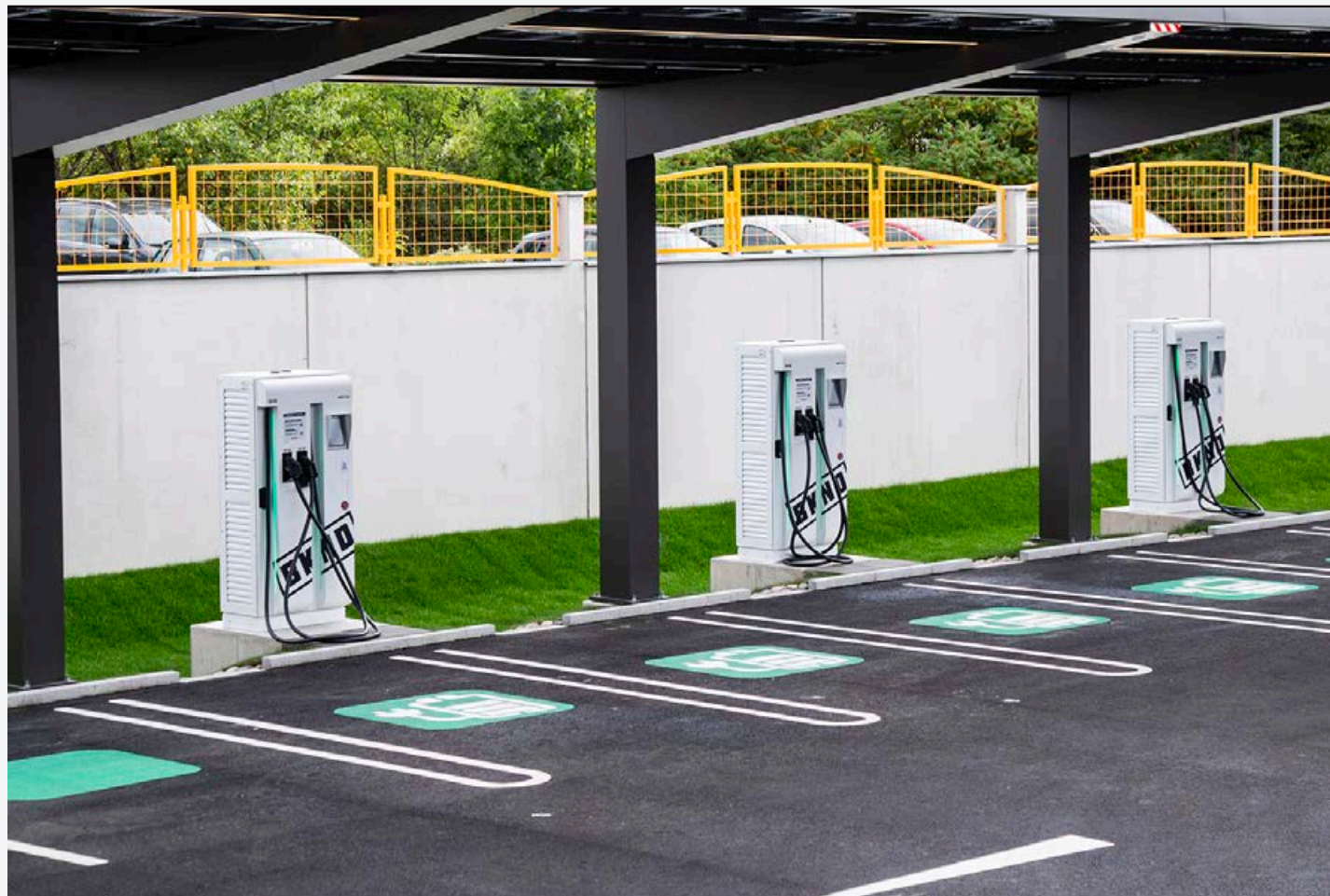
SKAPA **UNITY50-120**



VOLVO ENGELER **UNITY150-360**



EVN **UNITY50-120**



BKND **UNITY50-120**



LOISIUM **UNITY50-120**



BKND **UNITY150-360**

Typesetting and printing errors cannot be ruled out.
Subject to technical changes.

Edition 003
April 2024

WHO WE ARE. *WHAT WE DO.* WHERE WE GO.



Kostad Steuerungsbaue GmbH
www.kostad.at

...

Ternitz
Schoellergasse 9
2630 Ternitz
Austria

kostad.at
service.kostad.at
office@kostad.at
+43 (0)2234 72402-0

...

